

Travis Heights Elementary Reopening Plan

2020-2021 SY






Overview

Travis Heights Elementary is a community-led district charter that has a rich history since being established over 80 years ago. It also has a unique physical campus structure that poses challenges during the reopening of schools during the COVID 19 pandemic.

Due to the eclectic nature of the building(s), arrival and dismissal procedures will need to be strictly followed to insure the safety of staff, students and the general community.

1. The campus will be divided into 6 'Learning Locales' based on student grade level.
2. Each location is color coded.
3. Social Distancing Dots (SDDs) will be placed along all walkways outside and inside the campus so students can easily identify the paths they may take to go to and from their respective Learning Locale.

LEARNING LOCALE

	PreK Kinder
	1st & 3rd
	2nd
	4th & 5th
	PreK 3
	Office

Site Plan

Health Room

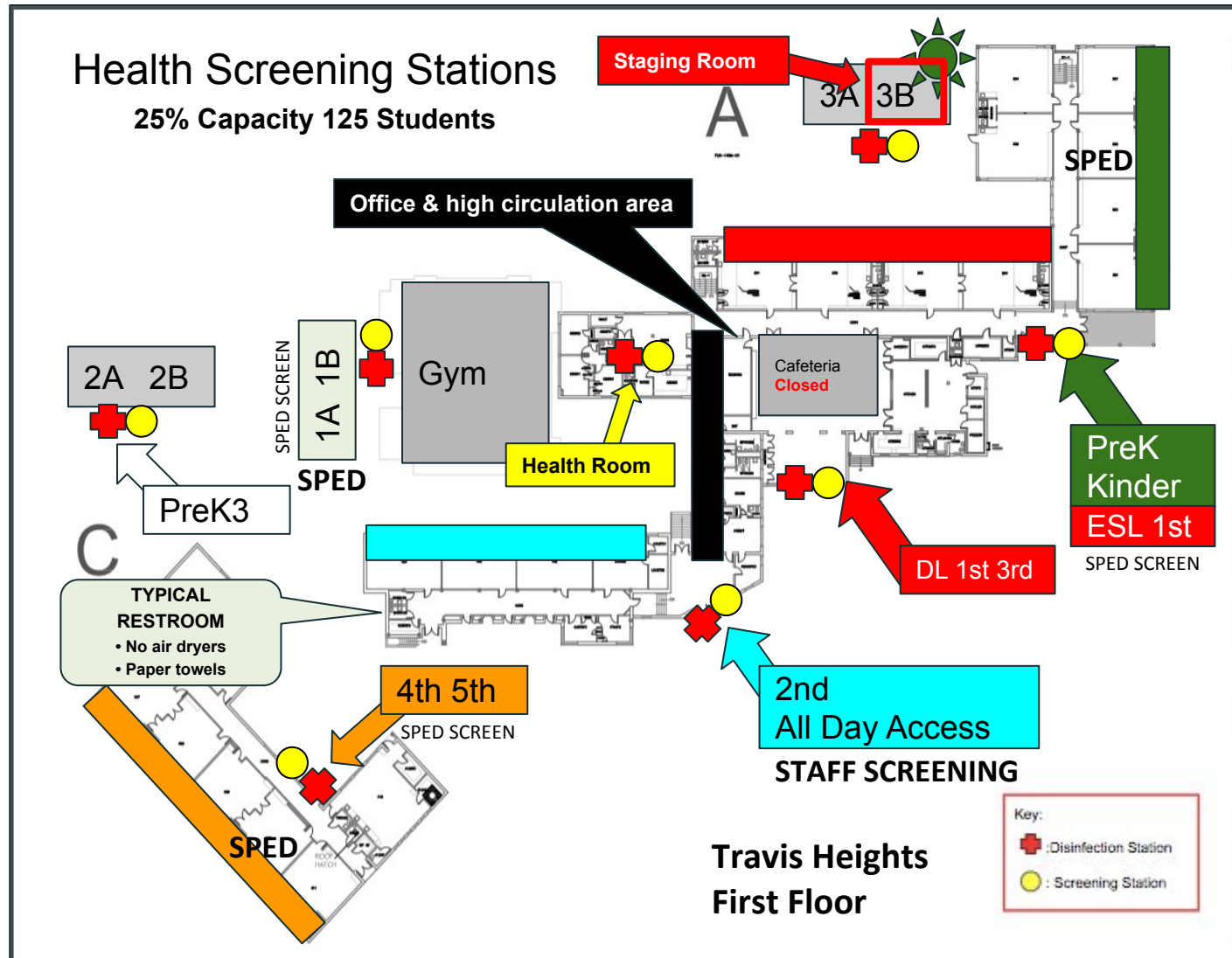
Non-COVID treatment for students

Staging Room

COVID symptomatic students

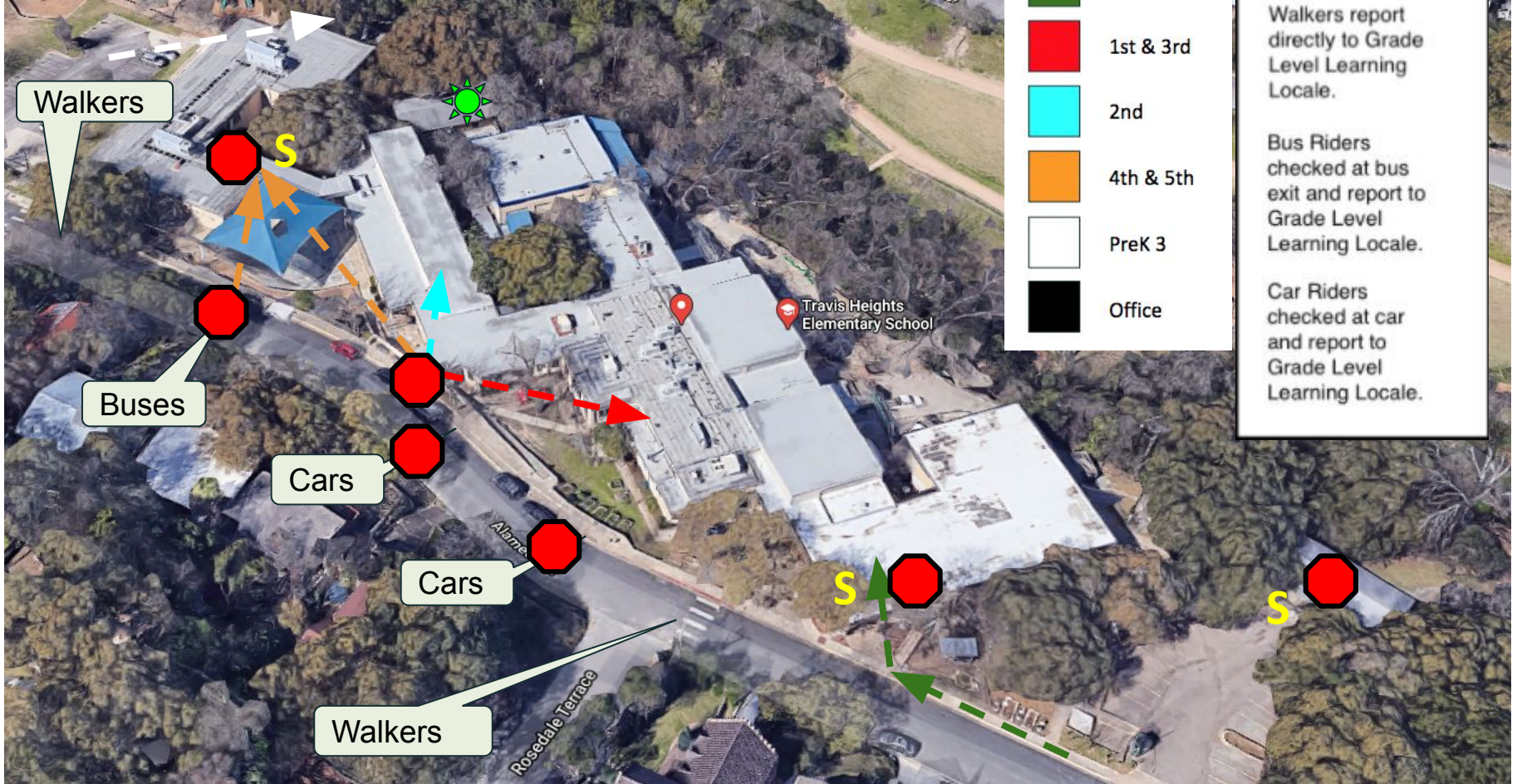
LEARNING LOCALE

-  PreK Kinder
-  1st & 3rd
-  2nd
-  4th & 5th
-  PreK 3
-  Office



Site Plan

Sped Screening



Arrival Procedure

There are 3 distinct types of arrivals and departures; Walkers, Bus Riders, and Car Riders.

Step One

Screen all students at point of exiting transportation to allow to come to campus. If students indicates fever or any symptoms (cough, sneeze, overall appearance, nausea) they must return to the transportation they arrived and leave the campus.

Bus riders will be temperature checked as they exit the bus and directed to the proper grade level station following sidewalk markers that are spaced at least 6 feet apart.

Car Riders will be temperature checked when exiting the car and directed to the proper grade level station following sidewalk markers that are spaced at least 6 feet apart.

Walkers will report directly to their grade level learning location check point.

Two staffers will be required to be at these arrival locations. One at the main entrance and the other along the sidewalk south of the main entrance.

Campus Color Codes Wristband Legend

LEARNING LOCALE



PreK Kinder



1st & 3rd



2nd



4th & 5th



PreK 3



Office

The screenshot shows the Wristco.com website interface. At the top, there is a navigation bar with links for Log On, Order Status, About Us, Contact Us, Call Us: 800-261-2070, and Get Live Help. Below the navigation bar, the main content area is divided into several sections:

- Product Header:** Displays "WRISTCO.COM" and navigation options for TYVEK® WRISTBANDS, SILICONE WRISTBANDS, PLASTIC WRISTBANDS, CLOSEOUTS, and FACTORY SECONDS. A "MY CART" icon is also present.
- Customization Prompt:** A banner encourages users to "CUSTOMIZE YOUR WRISTBAND NOW!" with a note that items are ready to ship in 1 business day. It includes a visual of a wristband with a custom text label.
- BULK PRICING:** A table showing pricing for packs of 500:

Packs of 500	Price
1-19	\$16.95
20+	\$14.95
- Shipping Information:** A note states "Will ship today if ordered before 3:00PM Central".
- PRODUCT DETAILS:**
 - Width: 1" (25.4 mm)
 - Length: 10" (25 cm)
 - Each pack of 500 Tyvek® wristbands are sequentially numbered on top of the adhesive for easy visibility and
- SELECT QUANTITIES:** A grid of color swatches with corresponding quantity input boxes (all set to 0). The colors include Neon Green, Neon Red, Neon Yellow, Neon Blue, Neon Orange, Neon Pink, Purple, Cranberry, Carib. Blue, Goldenrod, Lime Green, Mocha, Aqua, Berry, Black, and White.

<https://www.wristco.com/tyvek/tyvek-3-4-wristbands/>

Arrival Procedure

Step Two

Students will enter the “Learning Locale” queue and stand in line 6 feet apart leading up to a table for the grade level check point.

At the grade level check point.

Students will-

Have their temperature checked again. Must be 99.5 or less.

Be asked questions about health.

Use hand sanitizer to clean hands.

Be given a mask if does not have one on.

Be given one **TYVEC** wristbands for the day.

Students who become sick during the day will be taken to the staging room.

LEARNING LOCALE



PreK Kinder



1st & 3rd



2nd



4th & 5th



PreK 3



Office

Learning Locale Health Station

Line up on SDDs
along fence

Temp Check

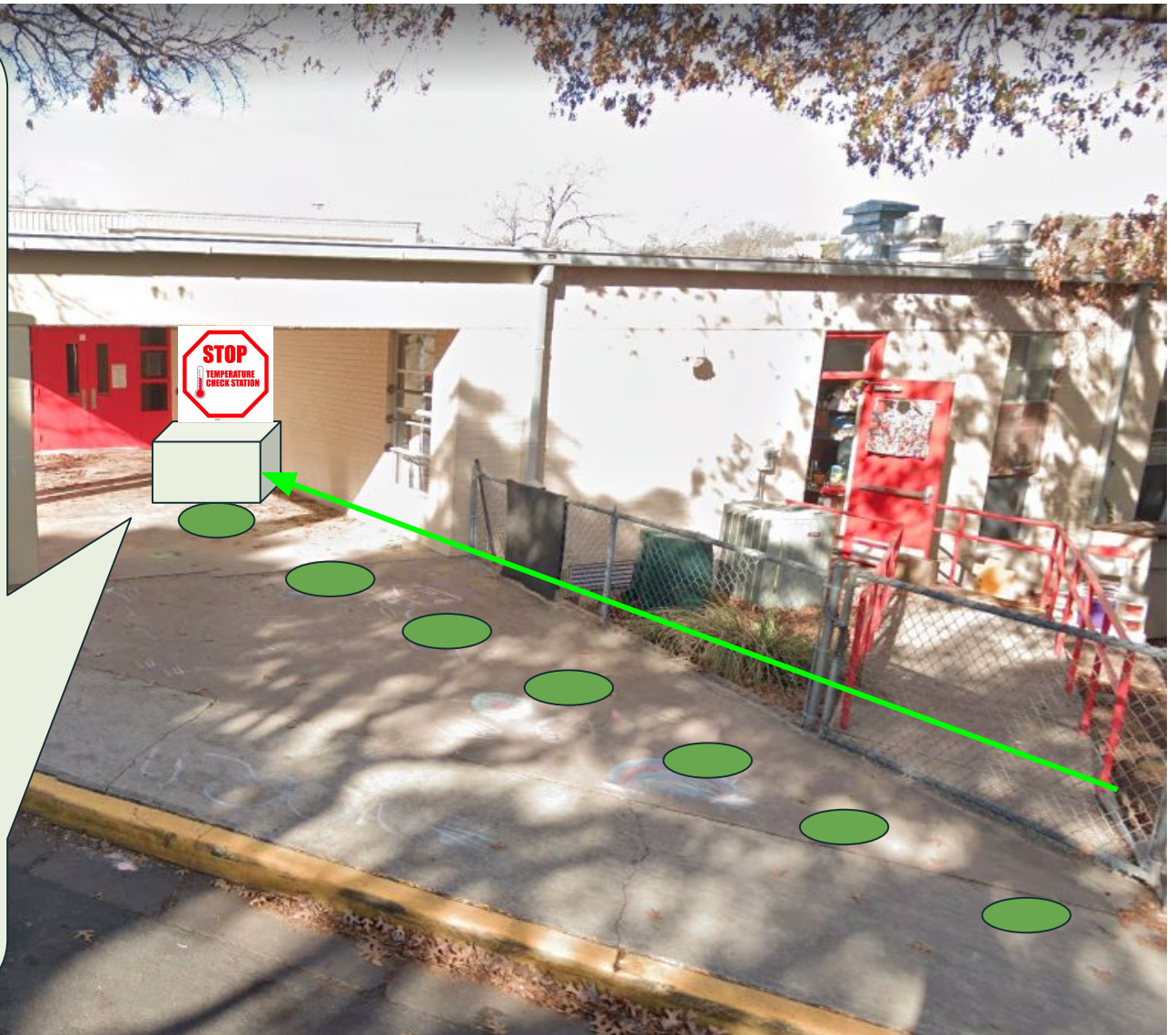
Health Questions

Hand Sanitizer

Mask

Wristband

Enter building and
follow 6 foot Social
Distancing Dots to
class.



Learning Locale Health Station

Line up on SDDs
along fence

Temp Check

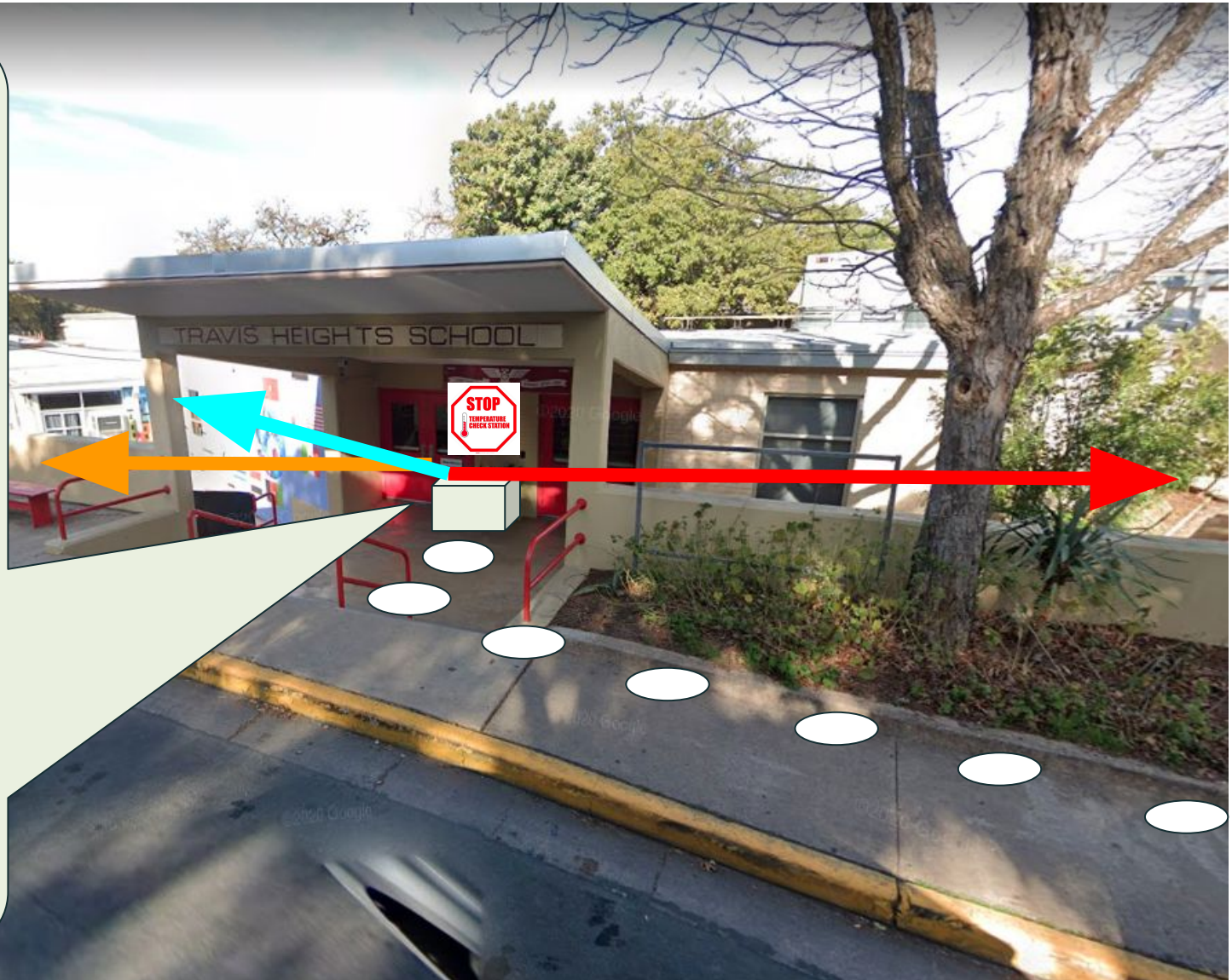
Health Questions

Hand Sanitizer

Mask

Wristband

Enter building and
follow 6 foot Social
Distancing Dots to
class.



Arrival Procedure

Step Three

Students will enter the building and follow the correct color SDDs to their classroom. Their teacher may have additional steps specific to that teacher's classroom routine for arrival.

Notes

Parents will not be able to enter the building and may not stand in the queue.

Health Screenings: 7:10 - 7:45 am

- Approx. 15 sec per screening
- 3 lines, minimum
- Post 1st bell, screenings performed at front door by office personnel, parents cannot enter building
- Staffing: 3 lead screeners
- 1 over per entrance
- Line management
- Escorting students to staging room in building