

The logo features the words "Coffee Chat" in a cursive script, enclosed within a hand-drawn, circular outline that resembles a coffee bean or a coffee cup rim.

*Coffee Chat*

**Join us for our Principal Parent Coffee**

You are cordially invited to come join us for a  
Principal/Parent Coffee on:

**Texas report card ratings**

**Friday, January 27, 2017**

**At 8:00 a.m.**

**Cafeteria**

# Coffee Chat

## Acompáñenos para un café con la Directora para los Padres

Están cordialmente invitados a un café con la directora sobre:

Clasificación de boleta de calificaciones en Texas

**Viernes, 27 de enero del 2017**

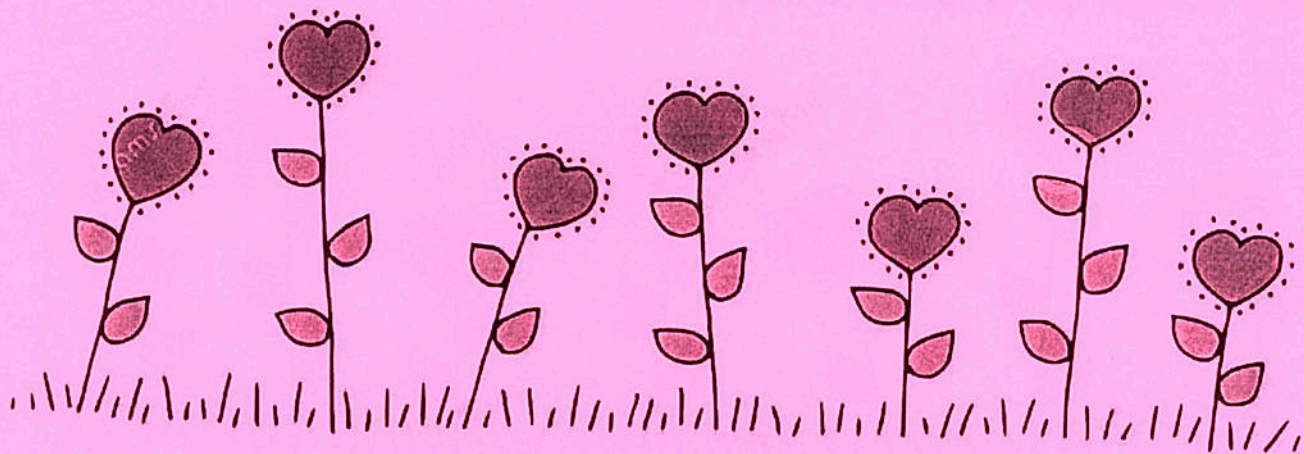
**A las 8:00 a.m.**

**Cafetería**



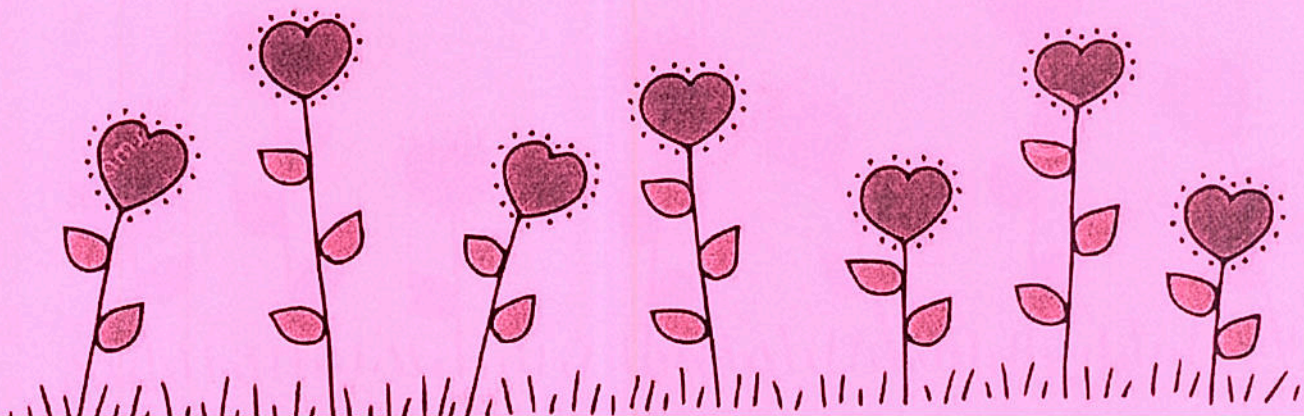
# Flowers For Friends Feb 1<sup>st</sup>-8<sup>th</sup>!

Show your friends, classmates, and teachers how much you care! Student Council will be holding their annual Flower for Friends fundraiser February 1<sup>st</sup> through February 8<sup>th</sup>. Flowers are \$1.50 each and will be delivered on February 10<sup>th</sup>. Proceeds are used to fund Student Council projects and initiatives. But you better hurry, flowers are limited!



# Flores para Amigos 1-8 de febrero!

¡Muestre a sus amigos, compañeros de clase, y maestros cuánto usted cuida! El equipo de Student Council llevará a cabo su recaudación de fondos anual de la Fundación "Flores para los Amigos" Del 1 de febrero al 8 de febrero. Las flores son \$1.50 cada uno y serán entregadas el 10 de febrero. Los ingresos se utilizan para financiar proyectos e iniciativas Del Student Council. Pero es mejor que te apures, las flores son limitadas!





**AUSTIN**  
Independent School District

Department of Research  
and Evaluation

AISD Parents & Families,

As the district continues to strive for excellence in preparing our students for academic success, we encourage parents to offer feedback by completing the *AISD Parent Survey*. Your opinions are important and will be taken into consideration as we strive to serve our students better.

Within the next few weeks, please complete the paper survey that the school provides you. As an alternative, the survey will be available on the district's website: [www.austinisd.org](http://www.austinisd.org).

Once available, the results of the survey will be distributed to campus principals, district administrators, and the Board of Trustees. Our community also can view the results when the reports are posted to the AISD website by the end of June.

If you have any questions or concerns about the survey, you may contact the AISD Department of Research and Evaluation at 512-414-1724.

Thank you for taking the time to help us understand our strengths and opportunities for improvement.





**AUSTIN**  
Independent School District

Department of Research  
and Evaluation

Padres y familias del AISD:

A medida que el distrito continúa con sus esfuerzos para alcanzar la excelencia en la preparación de los estudiantes para que logren el éxito académico, animamos a los padres de familia a dar sus opiniones llenando la *Encuesta para Padres de Familia del AISD*. Sus opiniones son importantes y se considerarán en el trabajo que realizamos para servir mejor a nuestros estudiantes.

Durante las próximas semanas, les pedimos que por favor completen la encuesta impresa que la escuela les ha proporcionado. Como alternativa, la encuesta también estará disponible en el sitio de Internet del distrito: [www.austinisd.org](http://www.austinisd.org).

Una vez que tengamos los resultados de la encuesta, éstos se distribuirán a los directores de los planteles, administradores del distrito y a la Mesa Directiva. La comunidad también podrá ver los resultados en el sitio de Internet del distrito cuando los informes se publiquen a finales de junio.

Si tienen alguna pregunta o inquietud sobre la encuesta, pueden comunicarse con el Departamento de Investigación y Evaluación del AISD al (512) 414-1724.

Gracias por tomar el tiempo para ayudarnos a entender mejor nuestras fortalezas y las oportunidades que tenemos para mejorar.

# TRAVIS HEIGHTS ELEMENTARY SCHOOL

2010 ALAMEDA • AUSTIN, TX 78704 • (512) 414-4495 • FAX (512) 442-9537



January 25, 2017

Dear Parents,

Attached you will find a copy of the State of Texas 2015–16 School Report Card for Travis Heights Elementary. This is a report required by the Texas Legislature and prepared by the Texas Education Agency. It is to be sent to the parent or guardian of every child enrolled in a Texas public school. The report provides information concerning student performance on the State of Texas Assessments of Academic Readiness (STAAR<sup>®</sup>), as well as information on student enrollment, class size averages, and financial expenditures.

The information contained in the School Report Card is required by state law and is briefly described in the enclosed “2015–16 School Report Card Definitions.” The report for our school may or may not have all the information described because the information presented depends on whether the school is an elementary, middle, or high school.

State law requires that the school report card display information about the state, the district, and the school. Where possible, the information must be reported by race/ethnicity and socio-economic status of the students and must include at least two years of results.

The School Report Cards can be found online at  
<https://rptsvr1.tea.texas.gov/perfreport/src/2016/campus.srch.html>

A more complete report about Travis Heights Elementary, the Texas Academic Performance Report (TAPR), is available by contacting my office or can be accessed online at <https://rptsvr1.tea.texas.gov/perfreport/tapr/index.html>

Please contact me if you have any questions concerning this report card. Thank you for your continued support of Travis Heights Elementary.

Sincerely,

Lisa Robertson, Principal  
Travis Heights Elementary

# TRAVIS HEIGHTS ELEMENTARY SCHOOL

2010 ALAMEDA • AUSTIN, TX 78704 • (512) 414-4495 • FAX (512) 442-9537



25 de enero 2017

Estimado Padre de Familia:

Adjunto a esta carta encontrará una copia del reporte de las Calificaciones Escolares del Estado de Texas 2015–16 para Travis Heights Elementary. Estas Calificaciones Escolares son requeridas por la Legislatura del Estado de Tejas y preparadas por el departamento de La Agencia de Educación de Texas. Este reporte debe ser mandado a los padres o al guardián/mentor de cada estudiante inscrito en una escuela pública en Texas. Estas calificaciones proveen información concerniente al progreso académico de los estudiantes en la Evaluación de Preparación Académica del Estado de Texas (STARR) y también otra información como el número de estudiantes, tamaño promedio del salón escolar, y gastos.

La información contenida en estas calificaciones es requerida por la ley estatal y encontrará una breve descripción en el adjunto “Definiciones de las Calificaciones Escolares 2015–16”. El reporte que ha recibido puede *o no* contener toda la información descrita en estas definiciones porque el reporte de estos datos depende si la escuela es una primaria, secundaria o preparatoria.

La ley estatal también manda que el reporte incluye información del estado, del distrito escolar, y de nuestra escuela. Esta información debe ser reportada, en tanto sea posible, por grupo étnico/raza y estatus socioeconómico de los estudiantes y debe de incluir por lo menos dos años de resultados.

También puede encontrar estas calificaciones (*school report card*) en la internet bajo <https://rptsvr1.tea.texas.gov/perfreport/src/2016/campus.srch.html>

Usted puede obtener un reporte más completo sobre nuestra escuela Travis Heights Elementary en el Reporte del Desempeño Académico de Texas (TAPR), si se pone en contacto con nuestra oficina, o lo puede obtener en la internet bajo <https://rptsvr1.tea.texas.gov/perfreport/tapr/2016/index.html>

Por favor póngase en contacto con nosotros si tiene cualquier pregunta concerniente a este reporte de calificaciones escolares. Le agradezco su constante apoyo de Travis Heights Elementary.

Sinceramente,

Lisa Robertson, directora Travis  
Heights Elementary



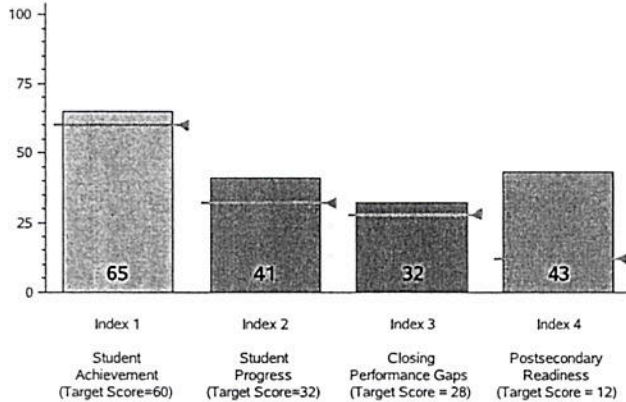
**Texas Education Agency  
2015-16 School Report Card  
TRAVIS HTS EL (227901140)**

District Name: **AUSTIN ISD**  
Campus Type: **Elementary**

Total Students: **521**  
Grade Span: **EE - 05**

**2016 Performance Index**

State accountability ratings are based on four performance indices: Student Achievement, Student Progress, Closing Performance Gaps, and Postsecondary Readiness. The bar graph below illustrates the index scores for this campus. The score required to meet each index's target is indicated below the index description and as a line on each bar. In 2016, to receive the Met Standard or Met Alternative Standard accountability rating, districts and campuses must meet targets on three indices: Index 1 or Index 2 and Index 3 and Index 4.



**2016 Accountability Rating**

**Met Standard**

For 2016 state accountability, campuses are rated as **Met Standard**, **Improvement Required**, or **Not Rated**. The rating, **Met Alternative Standard**, is assigned to charters and alternative education campuses evaluated under alternative education accountability (AEA) provisions.

**School and Student Information**

This section provides demographic information about the campus, including attendance rates; enrollment percentages for various student groups; student mobility rates; and class size averages at the campus, district, and state level, where applicable.

	Campus	District	State
<b>Attendance Rate (2014-15)</b>	95.9%	95.2%	95.7%
<b>Enrollment by Race/Ethnicity</b>			
African American	7.7%	7.8%	12.6%
Hispanic	65.8%	58.8%	52.2%
White	22.1%	26.6%	28.5%
American Indian	0.2%	0.2%	0.4%
Asian	2.3%	3.8%	4.0%
Pacific Islander	0.0%	0.1%	0.1%
Two or More Races	1.9%	2.7%	2.1%
<b>Enrollment by Student Group</b>			
Economically Disadvantaged	66.8%	57.4%	59.0%
English Language Learners	25.0%	28.0%	18.5%
Special Education	13.2%	10.0%	8.6%
<b>Mobility Rate (2014-15)</b>	10.5%	18.2%	16.5%

	Campus	District	State
<b>Class Size Averages by Grade or Subject</b>			
<b>Elementary</b>			
Kindergarten	21.3	18.5	18.9
Grade 1	17.6	18.6	19.1
Grade 2	14.9	18.5	19.1
Grade 3	21.0	18.0	19.1
Grade 4	19.3	18.2	19.0
Grade 5	22.5	22.6	20.8

**School Financial Information (2014-15)**

Various financial indicators are reported for the campus, district, and state, where applicable, based on actual data from the prior year. For more information, see <http://tea.texas.gov/financialstandardreports/>.

	Campus	District	State		Campus	District	State
<b>Instructional Staff Percent</b>	n/a	61.7%	64.5%	<b>Expenditures per Student</b>			
<b>Instructional Expenditure Ratio</b>	n/a	62.3%	63.8%	Total Operating Expenditures	\$9,238	\$10,089	\$9,065
				Instruction	\$6,357	\$5,482	\$5,158
				Instructional Leadership	\$226	\$198	\$138
				School Leadership	\$536	\$622	\$522

For more information about this campus, please see the Texas Academic Performance Report at <https://rptsrv1.tea.texas.gov/perfreport/tapr/2016/index.html>.

		State	District	All Students	African American	Hispanic	White	American Indian	Asian	Pacific Islander	Two or More Races	Econ Disadv
<b>STAAR Percent at Level II Satisfactory Standard or Above (Sum of All Grades Tested)</b>												
All Subjects	2016	75%	76%	65%	42%	60%	89%	-	*	-	86%	54%
Reading	2016	73%	74%	66%	38%	63%	86%	-	*	-	*	56%
Mathematics	2016	76%	77%	66%	44%	62%	90%	-	*	-	*	56%
Writing	2016	69%	69%	56%	*	47%	94%	-	*	-	*	39%
Science	2016	79%	81%	64%	*	59%	89%	-	*	-	-	56%
<b>STAAR Percent at Postsecondary Readiness Standard (Sum of All Grades Tested)</b>												
Two or More Subjects	2016	45%	50%	31%	*	22%	76%	-	-	-	*	15%
Reading	2016	46%	52%	43%	*	35%	84%	-	-	-	*	28%
Mathematics	2016	43%	48%	33%	*	22%	76%	-	-	-	*	16%
Writing	2016	41%	45%	36%	*	23%	80%	-	-	-	*	17%
Science	2016	47%	53%	31%	*	22%	100%	-	-	-	-	14%
<b>STAAR Percent at Advanced Standard (Sum of All Grades Tested)</b>												
All Subjects	2016	18%	23%	21%	*	15%	49%	-	*	-	*	9%
Reading	2016	17%	23%	27%	*	22%	55%	-	*	-	*	14%
Mathematics	2016	19%	23%	19%	*	14%	43%	-	*	-	*	8%
Writing	2016	15%	18%	15%	*	*	44%	-	*	-	*	*
Science	2016	16%	21%	13%	*	*	56%	-	*	-	-	*
<b>STAAR Percent Met or Exceeded Progress</b>												
All Subjects	2016	62%	62%	63%	67%	61%	73%	-	*	-	-	56%
Reading	2016	60%	61%	62%	*	58%	73%	-	*	-	-	55%
Mathematics	2016	63%	63%	64%	*	63%	73%	-	*	-	-	57%
<b>STAAR Percent Exceeded Progress</b>												
All Subjects	2016	17%	19%	26%	33%	25%	27%	-	*	-	-	23%
Reading	2016	16%	18%	24%	*	24%	27%	-	*	-	-	20%
Mathematics	2016	17%	20%	27%	*	26%	27%	-	*	-	-	27%
<b>Progress of Prior-Year Non-Proficient Students: Percent of Non-Proficient Students Passing STAAR (Sum of Grades 4-8)</b>												
Reading	2016	35%	33%	33%	*	37%	-	-	*	-	-	32%
<b>Students Success Initiative</b>												
Grade 5												
Students Meeting Level II Standard on First STAAR Administration												
Reading	2016	73%	76%	72%	*	70%	89%	-	*	-	-	62%
Mathematics	2016	77%	80%	74%	*	76%	89%	-	*	-	-	67%
Students Requiring Accelerated Instruction												
Reading	2016	27%	24%	28%	*	30%	*	-	*	-	-	38%
Mathematics	2016	23%	20%	26%	*	24%	*	-	*	-	-	33%
STAAR Cumulative Met Standard												
Reading	2016	80%	83%	77%	*	78%	89%	-	*	-	-	69%
Mathematics	2016	85%	87%	81%	83%	81%	89%	-	*	-	-	77%
STAAR Non-Proficient Students Promoted by Grade Placement Committee												
Reading	2015	95%	99%	100%	-	100%	-	-	-	-	*	100%